



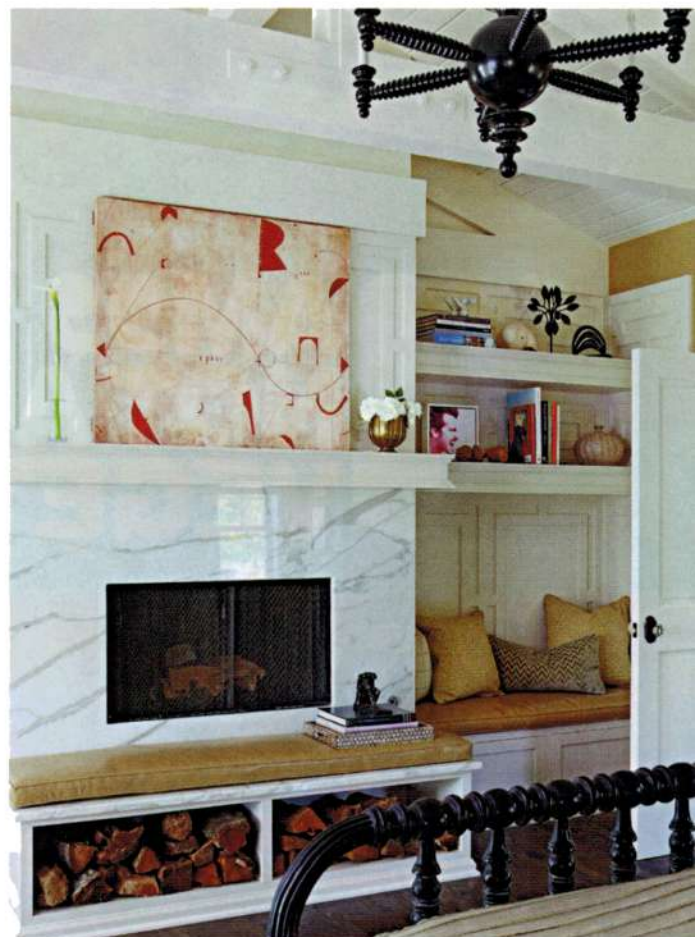
Michelle Workman
Living Room

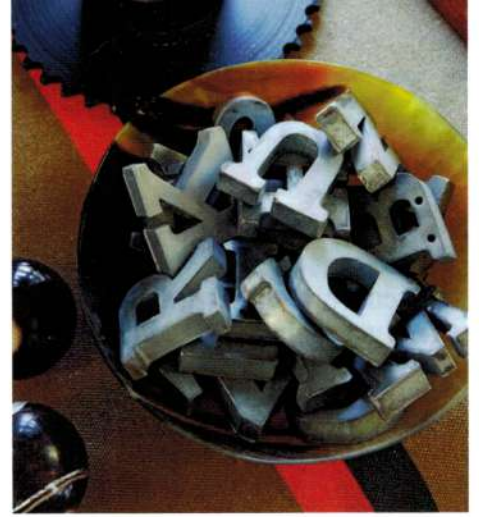
The gray morning fog brightened by blasts of sunlight shimmering on the turquoise ocean inspired Michelle Workman's palette. A gray-and-white, large-scale wisteria-patterned wall covering sets the scene and is warmed by the sumptuous gold-and-ivory drapery and sofa fabrics. A vintage bench reupholstered in a silver metallic snakeskin adds a bit of bling, as do the Lucite-and-chrome drapery rod and finials. "I love a little touch of glamour—probably because I grew up in Hollywood," she says. The vintage portrait on the mantel was an estate-sale find Workman couldn't resist. "I like to pretend she's the matriarch of the home." (michelleworkman.com)

Ryan Brown Upstairs Hallway

Artwork plays a prominent role in Ryan Brown's interiors, particularly in an upstairs hall where he arranged a suite of paintings by Los Angeles artist Paul Rusconi. Symmetrically arranged in matching frames, the paintings create a dramatic gallery effect. "I wanted to make the space its own destination rather than just a landing," says Brown. (ryanbrowndesigninc.com) >







Ryan Brown Guest Bedroom + Bath

A collector at heart, Brown layered an upstairs bedroom with unusual objects (check out the industrial-style lamps and swing chair) and great art (an original Andy Warhol of Liza Minnelli hangs in a corner). A spool chandelier designed by Paul Marra pops against the original vaulted, beamed ceilings, which Brown painted crisp white to heighten impact. Relaxation extends outside with eclectic furnishings on a balcony that has views of a 250-year-old oak tree, the pool, and the ocean. In the bath, gray walls are juxtaposed with the dark floor and white ceiling. Charcoal-toned tiles are similarly balanced with creamy Carrara marble in the shower. ▶

